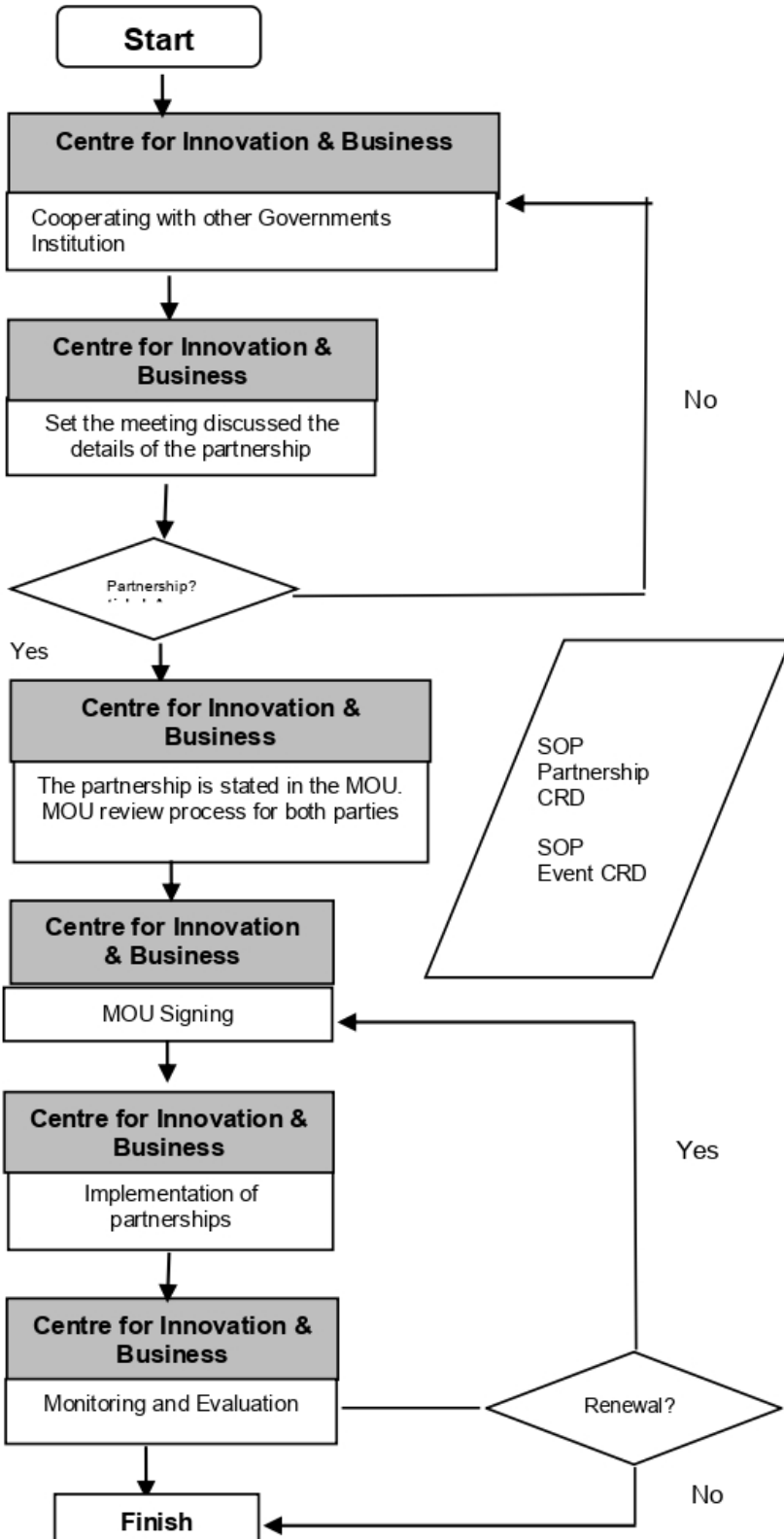


## STANDAR OPERATING PROCEDURE



| Documents                     | References   |
|-------------------------------|--|
| Governments Institution       | The Center for Innovation and Business actively collaborates with partners from government agencies, both central and local governments.                       |
| Meeting                       | In formulating partnership cooperation, a meeting is needed to unify the scope and scheme of partnership cooperation agreed upon with governments institution. |
| MOU                           | The partnership cooperation agreement is set forth in a binding document (Memorandum of Understanding / MOU).  |
| MOU Signing                   | MOU Signing support by Corporate Reputation Dept (CRD).  |
| Implementation of Partnership | The implementation of the partnership is carried out according to the Mutual agreement in accordance with the role in the partnership.                         |
| Monitoring and Evaluation     | Monitoring and evaluation is needed so that cooperation can run well.  |
| Related Documents             | SOP Partnership CRD<br>SOP Event CRD   |