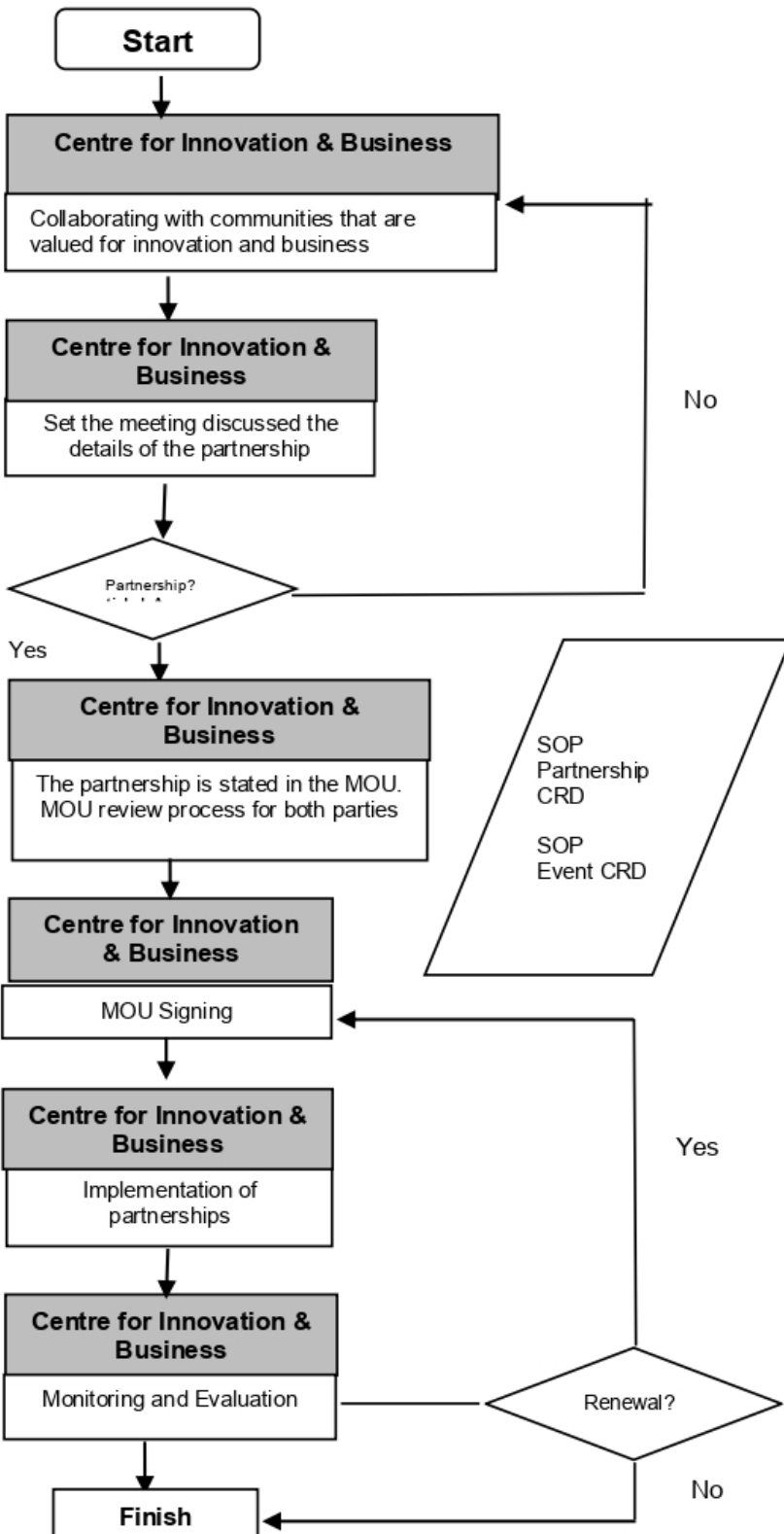


**STANDAR OPERATING PROCEDURE**



Documents	References
Community	The Center for Innovation and Business in its activities is actively collaborating with partners from the community, either as fostered or who can contribute to advancing society together.
Meeting	In formulating partnership cooperation, a meeting is needed to unify the scope and scheme of partnership cooperation agreed upon with community.
MOU	The partnership cooperation agreement is set forth in a binding document (Memorandum of Understanding / MOU).
MOU Signing	MOU Signing support by Corporate Reputation Dept (CRD).
Implementation of Partnership	The implementation of the partnership is carried out according to the Mutual agreement in accordance with the role in the partnership.
Monitoring and Evaluation	Monitoring and evaluation is needed so that cooperation can run well.
Related Documents	SOP Partnership CRD SOP Event CRD

