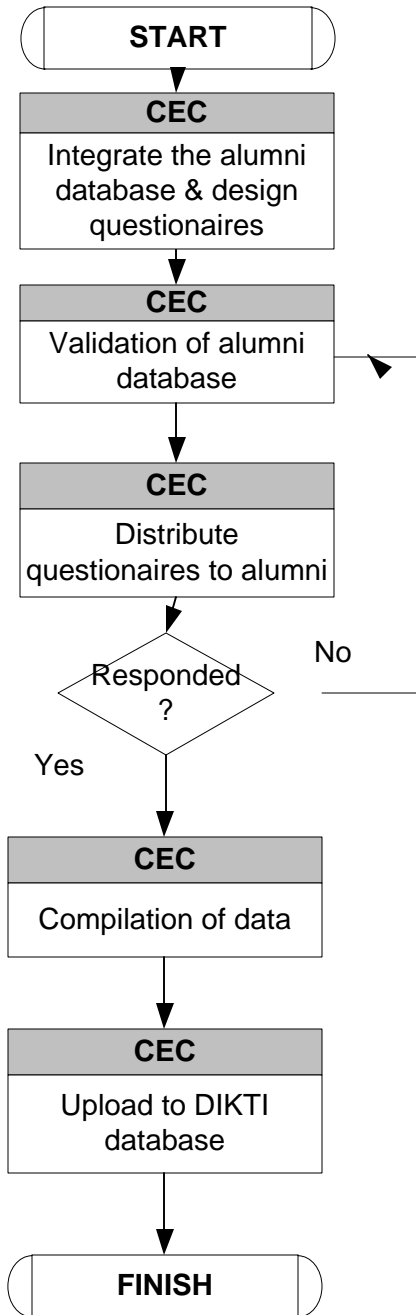


Prepared by :Head CEC	<b>TRACER STUDY (Study Pelacakan Alumni)</b>	Date : 01 Maret 2020
Checked by : MR		Revision : 00
Approved by: Vice Rektor III	Doc. No.: SOP-CEC/TS/05/IKB/03/2020/00	Page : 01 Of 01

## STANDARD OPERATING PROCEDURE



Dokumen	Referensi
- Questioner Tracer Study Alumni	Careers & Employability Centre use online Questioner with Google Form that spread to the Alumni. Link : <a href="http://bit.ly/TracerStudy-2019">http://bit.ly/TracerStudy-2019</a>
Data Gathering	Integrate the Alumni Database & Design Questionnaires
Data Gathering Period	Upload to Dikti with this link <a href="http://pkts.belmawa.ristekdikti.go.id">pkts.belmawa.ristekdikti.go.id</a>
Sampling Method	To Reach Send by email, group chat and SMS Blast.
	2 step Data Gathering - 6 months after graduates - 2 years after graduates
	- Sampling 20% from Population (Alumni per batch)